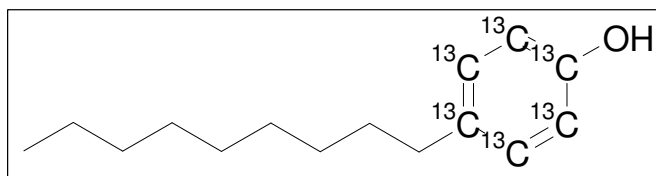
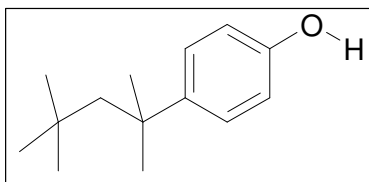


¹³C Alkylphenols, Part I**NEW: NOW AVAILABLE****ISO 18857-1: 2005****Water quality – Determination of selected alkylphenols**

This method describes the procedure for analysis of *tert*-butylphenol (4-(1,1,3,3-Tetramethylbutyl)phenol) and the isomer mixture of nonylphenols in water and is useful for the analysis of other alkylphenols in water.

¹³C Labelled Internal Standard: n-Nonylphenol- Ring¹³C₆

Cat. No. 8625.15



Cat.No.1446.14

Calibration solutions for ISO 18857-1	Cat. No.
4- <i>n</i> -Nonylphenol-Ring ¹³ C ₆	8625.15-1-5AC *
4- <i>n</i> -Nonylphenol, Unlabelled Calibration solution	1450.15-1-5T
4-(1,1,3,3-Tetramethylbutyl)phenol, Unlabelled Calibration solution	1446.14-1-5T

Delivered in 1 µg/mL, 5 mL in toluene (T)

* Delivered in 1 µg/mL, in acetone (AC), Certan bottle, 4,5 mL



CHIRON.NO

Alkylphenols:

<i>C0-C1 Phenols</i>			<i>C6 Phenols</i>		
1427.6-1G	Phenol	1g	1806.12-1G	2-Phenylphenol	1g
1403.7-1G	<i>o</i> -Cresol	1g	1807.12-1G	3-Phenylphenol	1g
1404.7-1G	<i>m</i> -Cresol	1g	1808.12-1G	4-Phenylphenol	1g
1358.7-1G	<i>p</i> -Cresol	1g	1439.12-1G	2-/4-Cyclohexylphenol	1g
1637.4-KIT	Phenol C0-C1 Kit (neat)	Kit	1438.12-1G	4-Cyclohexylphenol	1g
<i>C2 Phenols</i>			<i>C7 Phenols</i>		
1405.8-1G	2,3-Dimethylphenol	1g	1795.12-K-IO	2,4-Diisopropylphenol	1mL
1406.8-1G	2,4-Dimethylphenol	1g	1520.12-K-IO	2,5-Diisopropylphenol	1mL
1407.8-1G	2,5-Dimethylphenol	1g	1434.12-250MG	2,6-Diisopropylphenol	250mg
1365.8-1G	2,6-Dimethylphenol	1g	1436.12-1G	2- <i>tert</i> -Butyl-4,6-dimethylphenol	1g
1409.8-1G	3,4-Dimethylphenol	1g	1435.12-1G	2- <i>tert</i> -Butyl-4-ethylphenol	1g
1360.8-1G	3,5-Dimethylphenol	1g	1437.12-1G	4- <i>n</i> -Hexylphenol	1g
1410.8-1G	2-Ethylphenol	1g	1642.11-KIT	Phenol C6 Kit	Kit
1364.8-1G	3-Ethylphenol	1g	<i>C7 Phenols</i>		
1411.8-1G	4-Ethylphenol	1g	2388.13-1G	2-Benzylphenol	1g
1638.9-KIT	Phenol C2 Kit	Kit	2389.13-1G	4-Benzylphenol	1g
<i>C3 Phenols</i>			1503.13-250MG	2-Cyclohexyl-5-methylphenol	250mg
1412.9-1G	2,3,5-Trimethylphenol	1g	2908.13-K-IO	2-Methyl-4- <i>tert</i> -hexylphenol	1mL
1413.9-1G	2,3,6-Trimethylphenol	1g	1440.13-1G	4- <i>n</i> -Heptylphenol	1g
1362.9-1G	2,4,6-Trimethylphenol	1g	1643.5-KIT	Phenol C7 Kit	Kit
1414.9-250MG	3,4,5-Trimethylphenol	250mg	<i>C8 Phenols</i>		
1418.9-1G	2-Isopropylphenol	1g	2439.14-K-IP	2-Benzyl-4-methylphenol	1000µg/mL
1415.9-1G	2- <i>n</i> -Propylphenol	1g	1515.14-K-IO	2,4-Di- <i>sec</i> -butylphenol	1000µg/mL
1516.9-K-IO	3-Ethyl-5-methylphenol	1mL	1441.14-1G	2,6-Di- <i>sec</i> -butylphenol	1g
1419.9-250MG	3-Isopropylphenol	250mg	1442.14-1G	2,4-Di- <i>tert</i> -butylphenol	1g
1416.9-1G	3- <i>n</i> -Propylphenol	1g	1443.14-1G	2,6-Di- <i>tert</i> -butylphenol	1g
1420.9-1G	4-Isopropylphenol	1g	1444.14-1G	3,5-Di- <i>tert</i> -butylphenol	1g
1417.9-1G	4- <i>n</i> -Propylphenol	1g	1445.14-1G	4- <i>n</i> -Octylphenol	1g
1639.11-KIT	Phenol C3 Kit	Kit	1446.14-1G	4- <i>tert</i> -Octylphenol	1g
<i>C4 Phenols</i>			1644.8-KIT	Phenol C8 Kit	Kit
1357.10-1G	4- <i>n</i> -Butylphenol	1g	<i>C9 Phenols</i>		
1421.10-1G	2- <i>sec</i> -Butylphenol	1g	1448.15-K-IO	2,6-Di- <i>tert</i> -butyl-4-methylphenol	1mL
1422.10-1G	4- <i>sec</i> -Butylphenol	1g	1522.15-K-IO	2-Methyl-4- <i>tert</i> -octylphenol	1mL
1359.10-1G	2- <i>tert</i> -Butylphenol	1g	1521.15-K-IO	4,6-Di- <i>tert</i> -butyl-2-methylphenol	1000µg/mL
1361.10-1G	3- <i>tert</i> -Butylphenol	1g	1450.15-K-IO	4- <i>n</i> -Nonylphenol	1000µg/mL
1423.10-1G	4- <i>tert</i> -Butylphenol	1g	1450.15-5K-IO	4- <i>n</i> -Nonylphenol	5000µg/mL
1428.10-1G	2-Isopropyl-5-methylphenol	1g	1450.15-5K-IO	4- <i>n</i> -Nonylphenol	5000µg/mL
1424.10-1G	4-Isopropyl-3-methylphenol	1g	1450.15-250MG	4- <i>n</i> -Nonylphenol	250mg
1425.10-250MG	5-Isopropyl-2-methylphenol	250mg	2044.15-K-IO	4-Nonylphenol, mixture of isomers	1000µg/mL
1426.10-1G	5-Isopropyl-3-methylphenol	1g	2365.15-K-IO	4-Nonylphenol, mixture of isomers, Type B	1000µg/mL
1640.10-KIT	Phenol C4 Kit	Kit	1645.6-KIT	Phenol C9 Kit	Kit
<i>C5 Phenols</i>			<i>C10+ Phenols</i>		
1363.11-250MG	4- <i>n</i> -Pentylphenol	250mg	1687.16-1G	4- <i>tert</i> -Butyl-2-phenylphenol	1g
1517.11-K-IO	2-(1-Methylbutyl)phenol	1000µg/mL	1455.16-250MG	2,4-Bis(1-methylbutyl)phenol	250mg
1518.11-K-IO	4-Isopentylphenol (two isomers)	1000µg/mL	1523.16-K-IO	2,4-Dimethyl-6-isooctylphenol	1000µg/mL
1433.11-1G	4- <i>tert</i> -Amylphenol	1g	1453.16-1G	2,4-Di- <i>tert</i> -pentylphenol	1g
1430.11-1G	2- <i>tert</i> -Butyl-4-methylphenol	1g	1452.16-1G	2,6-Di- <i>tert</i> -butyl-4-ethylphenol	1g
1431.11-1G	2- <i>tert</i> -Butyl-5-methylphenol	1g	1454.16-100MG	4- <i>tert</i> -Butyl-2,6-diisopropylphenol	100mg
1432.11-1G	2- <i>tert</i> -Butyl-6-methylphenol	1g	2436.18-K-IO	2- <i>n</i> -Dodecylphenol	1000µg/mL
1429.11-1G	4- <i>tert</i> -Butyl-2-methylphenol	1g	8109.18-250MG	4-Dodecylphenol, mixture of isomers	250mg
1519.11-K-IO	5- <i>tert</i> -Butyl-2-methylphenol	1000µg/mL	8108.18-250MG	2,4,6-Tri- <i>tert</i> -butylphenol	250mg
1641.9-KIT	Phenol C5 Kit	Kit	2437.19-K-IO	2- <i>n</i> -Dodecyl- <i>p</i> -cresol	1000µg/mL
			2438.19-K-IO	4- <i>n</i> -Dodecyl- <i>o</i> -cresol	1000µg/mL
			1646.11-KIT	Phenol C10+ Kit	Kit

