

Extraction Of Organochlorine Pesticides with In-line Florisil clean-up using the FMS TurboTrace ABN Solid Phase Extraction system

Introduction

Organochlorine Pesticides are among the more notorious organic pollutants. Gaining wide spread attention into the latter part of the 20th century, and ultimately leading to their ban, OCPs remain with us as a legacy contaminant in the environment. In water samples, OCPs are monitored by the U.S. Environmental Protection Agency by various methods including methods EPA 508, EPA 608 and EPA 8081.

The use of Solid Phase Extraction (SPE) can rapidly increase both extraction efficiency and reduce lab solvent usage. By implementing the FMS TurboTrace® ABN system with its dual cartridge functionality, an in-line Florisil cartridge can be added to perform automated extract clean-up during the elution step.

Instrumentation

- FMS, Inc. TurboTrace® ABN SPE system
- FMS, Inc. SuperVap® 12 Concentrator
- 55 ml SuperVap Tubes vials
- Agilent 7890 GC with μ ECD detector

Consumables

- FMS Inc 1 gram C18 SPE cartridges
- FMS Inc Florisil SPE cartridges
- Acetone, pesticide grade or equivalent
- n-hexane, pesticide grade or equivalent
- HPLC grade water
- 6N HCL
- Anhydrous Sodium Sulfate, ACS grade or equivalent

Sample/Reagent Prep

1. Add 7 grams NaSO_4 to Florisil cartridges.
2. Affix C18 cartridge to position 1 and Florisil cartridge to position 2
3. Bring samples to pH 2 adding HCL drop wise
4. Add add methanol to samples (5mls per 1 Liter)
5. Add respective surrogate and spiking solutions to samples
6. Attach sample bottles to SPE system

SPE Procedure

1. Condition Florisil/ NaSO_4 SPE cartridge with 20mls 10% Acetone in Hexane
2. Condition C18 SPE cartridge with 10mls Acetone
3. Condition C18 SPE cartridges with 20mls H_2O
4. Load Samples across C18 SPE cartridges via vacuum
5. Dry C18 Cartridge with N_2 for 10 minutes
6. Automatic solvent rinse of sample bottle with 10% acetone in hexane
7. Bottle rinse loaded across both cartridges and collected in SuperVap concentrator
8. Additional 10 mls elution solvent passed C18 cartridges
9. 10 mls elution solvent passed across Florisil cartridge and nitrogen purged to SuperVap

Total elution solvent: ~40mls



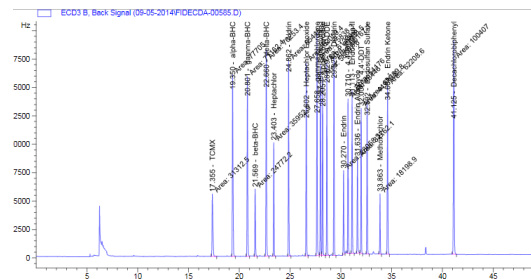
SuperVap

1. Preheat temperature: 55 °C
2. Evap mode: 10PSI Nitrogen with sensor

Results

<u>Analyte</u>	<u>Mean Rec</u>	<u>RSD</u>
α-BHC	105.9%	2.2%
γ-BHC (Lindane)	105.1%	2.0%
β-BHC	98.8%	2.1%
δ-BHC	110.8%	2.1%
Heptachlor Aldrin	100.3%	9.8%
Heptachlor Epoxide	76.4%	6.9%
γ-Chlordane	101.3%	1.9%
Endosulfan I	92.1%	3.1%
α-Chlordane	94.9%	2.0%
4,4'-DDE	99.7%	2.0%
Dieldrin	93.9%	2.6%
Endrin	102.0%	2.1%
4,4'-DDD	110.5%	2.7%
Endosulfan II	102.9%	3.7%
Endrin Aldehyde	101.8%	2.7%
4,4'-DDT	84.1%	5.8%
Endosulfan Sulfate	103.9%	4.1%
Methoxychlor	103.5%	3.0%
Endrin Ketone	100.1%	6.3%
Endrin Ketone	99.8%	4.5%
<u>Surrogate</u>		
TCMX	72.3%	5.7%
PCB-209	78.7%	11.2%

Results of IPR study performed on Turbo Trace ABN system with in-line Florisil



Chromatogram of an LFB extraction at .5 µg/L

Conclusions

Extraction of the water samples performed on the TurboTrace ABN system enabled a fully automated extraction process due to its dual cartridge capabilities. Samples were loaded across the C18 cartridges, then eluted through the Florisil cartridges in succession. The addition of NaSO₄ to the clean-up cartridge enabled residual water removal from the extract without a separate, manual step.

Analytical results yielded spiked recoveries of Organochlorine pesticides to all be between 70-130%, with low RSDs. Analysis of Method blanks showed no residual background or carryover on the SPE system. Comparisons of dirty extracts using Florisil with extracts conventionally extracted with no clean-up procedure showed effective removal of non-target interferences and minimal chromatographic interferences using the in-line clean-up procedure.

The ability to eliminate an entire evaporation step, paired with a methylene chloride free extraction resulted in both a more efficient extraction process, as well as a more environmentally conscience one as well.

For more information contact FMS:
 FMS, Inc.
 580 Pleasant Street
 Watertown, MA 02472
 Phone: (617) 393-2396
 Fax: (617) 393-0194
 Email: onlineinfo@fms-inc.com
 Web site: www.fms-inc.com