



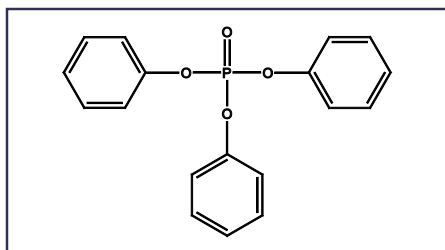
February 15, 2011

## NEW PRODUCTS

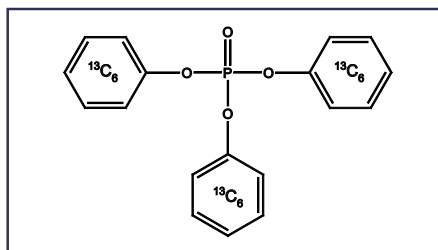
### NATIVE & MASS-LABELLED TRIPHENYL PHOSPHATE AND SUBSTITUTED ARYL PHOSPHATES

Triaryl phosphates are primarily used as flame retardants and plasticizers in phenolic and phenylene-oxide based resins, but are also utilized as components of hydraulic fluids and/or lubricating oils. Triphenyl phosphate (TPP) itself has been widely detected in air, water, sediment, and aquatic organisms at low levels. The lifetime of TPP in aquatic environments has been reported to be very short; its limited water solubility and relatively high soil adsorption coefficient causes it to partition to sediment quickly and undergo biodegradation. It is believed that the main source of human exposure to TPP is through its release from production facilities into the air. Another route to the atmosphere may be through the combustion of plastics and/or volatilization of TPP from surface waters.

To aid in the detection and quantification of TPP, Wellington has produced native (TPP) and carbon-13 mass-labelled (MTPP) triphenyl phosphate.



TPP



MTPP

Catalogue Number	Product (toluene)	Qty	Conc
TPP	Triphenyl phosphate	1.2 ml	50 µg/ml
MTPP	<sup>13</sup> C <sub>18</sub> -Triphenyl phosphate	1.2 ml	50 µg/ml



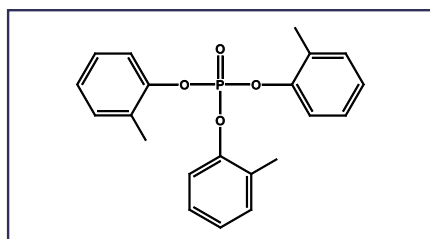
WELLINGTON LABORATORIES



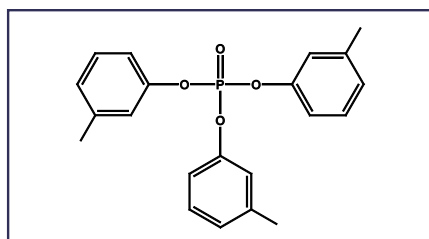
Campro Scientific GmbH - Germany

P.O. Box 37 03 31 • 14133 Berlin • Phone +49.(0)30.629.01.89.0 • Fax +49.(0)30.629.01.89.89 • info@campro.eu • www.campro.eu

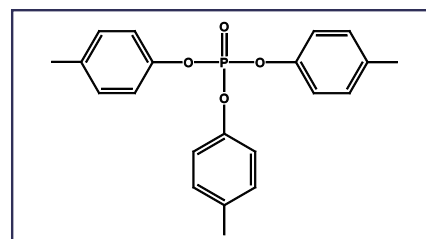
Wellington is also offering reference standards of Tri-*o*-tolyl phosphate (**TOTP**), Tri-*m*-tolyl phosphate (**TMTP**), Tri-*p*-tolyl phosphate (**TPTP**), Tris(3,5-dimethylphenyl) phosphate (**T35DMPP**), and Tris(2-isopropylphenyl) phosphate (**T2IPPP**). In order to meet your analytical needs, a mixture of these compounds will be made available upon request. Please contact your local distributor for more information.



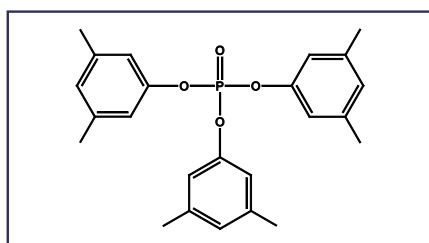
**TOTP**



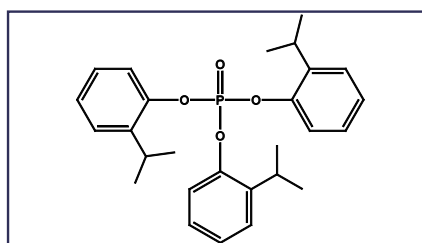
**TMTP**



**TPTP**



**T35DMPP**



**T2IPPP**

Catalogue Number	Product (toluene)	Qty	Conc
<b>TOTP</b>	Tri- <i>o</i> -tolyl phosphate	1.2 ml	50 µg/ml
<b>TMTP</b>	Tri- <i>m</i> -tolyl phosphate (97% purity)	1.2 ml	48.5 µg/ml
<b>TPTP</b>	Tri- <i>p</i> -tolyl phosphate	1.2 ml	50 µg/ml
<b>T35DMPP</b>	Tris(3,5-dimethylphenyl) phosphate	1.2 ml	50 µg/ml
<b>T2IPPP</b>	Tris(2-isopropylphenyl) phosphate	1.2 ml	50 µg/ml

**NOTE:**

TOTP is also known as tri-*o*-cresyl phosphate,  
 TMTP is also known as tri-*m*-cresyl phosphate,  
 and TPTP is also known as tri-*p*-cresyl phosphate.



www.well-labs.com

**CAMPRO**  
**SCIENTIFIC**

Campro Scientific GmbH - Germany

P.O. Box 37 03 31 • 14133 Berlin • Phone +49.(0)30.629.01.89.0 • Fax +49.(0)30.629.01.89.89 • info@campro.eu • www.campro.eu