**NEW PRODUCTS****NATIVE/MASS-LABELLED BISPHENOL A  
& NATIVE BISPHENOL ANALOGUES**

Bisphenol A (BPA) is a high production volume chemical with over 8 billion pounds being produced on a global scale annually. Its use in polycarbonate plastics and epoxy resins has resulted in its incorporation into a vast number of consumer products. Concerns have been raised regarding the leaching of residual BPA from packaging and storage containers into food and beverages due to its reported endocrine disrupting effects. Although BPA is the most widely recognized bisphenol on the market, there are a number of analogues that are currently in production to replace it. In fact, recent studies have reported the detection of Bis(4-hydroxyphenyl) sulfone (BPS) and 2,2-Bis(4-hydroxyphenyl)butane (BPB) in canned food products. Due to the structural similarity between BPA and its analogues, it is believed that this family of compounds will exhibit similar environmental behaviour and toxicity. In order to aid researchers in the detection of BPA and BPA analogues in environmental samples, **Wellington** has produced native and mass-labelled standards of Bisphenol A (**BPA** and **MBPA** respectively) as well as seven native bisphenol analogues (**BPAF**, **BPAP**, **BPB**, **BPF**, **BPP**, **BPS**, and **BPZ**).

Catalogue Number	Product (methanol)	Qty	Conc
<b>BPA</b>	2,2-Bis(4-hydroxyphenyl)propane	1.2 ml	50 µg/ml
<b>MBPA</b>	2,2-Bis(4-hydroxy- <sup>13</sup> C <sub>6</sub> -phenyl)propane	1.2 ml	50 µg/ml

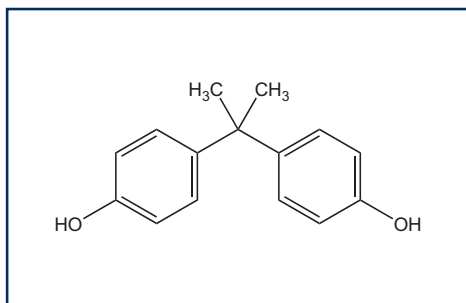
Catalogue Number	Product (methanol)	Qty	Conc
<b>BPAF</b>	2,2-Bis(4-hydroxyphenyl)hexafluoropropane	1.2 ml	50 µg/ml
<b>BPAP</b>	4,4'-(1-Phenylethylidene)bisphenol	1.2 ml	50 µg/ml
<b>BPB</b>	2,2-Bis(4-hydroxyphenyl)butane	1.2 ml	50 µg/ml
<b>BPF</b>	4,4'-Dihydroxydiphenylmethane	1.2 ml	50 µg/ml
<b>BPP</b>	4,4'-(1,4-Phenylenediisopropylidene)bisphenol	1.2 ml	50 µg/ml
<b>BPS</b>	Bis(4-hydroxyphenyl) sulfone	1.2 ml	50 µg/ml
<b>BPZ</b>	1,1-Bis(4-hydroxyphenyl)cyclohexane	1.2 ml	50 µg/ml

Please contact your local distributor or [info@well-labs.com](mailto:info@well-labs.com) for pricing and delivery.

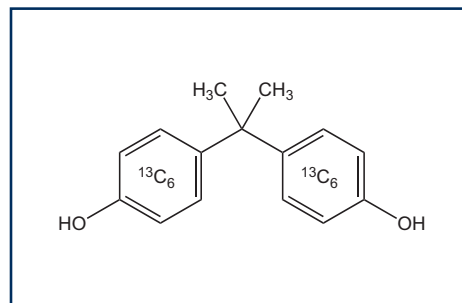
Visit our website ([www.well-labs.com](http://www.well-labs.com)) for a complete listing of our new products.



## NATIVE & MASS-LABELLED BISPHENOL A

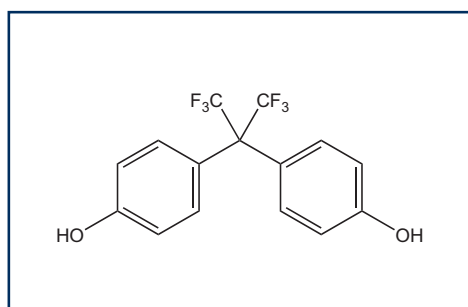


**BPA**

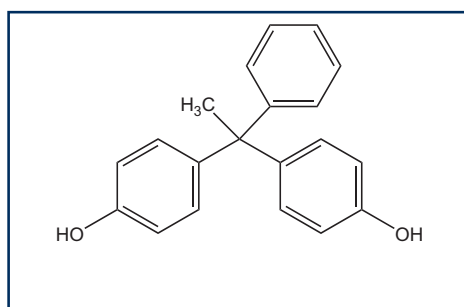


**MBPA**

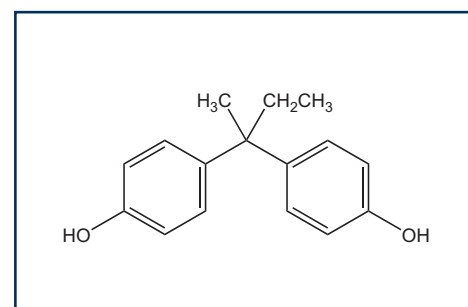
## NATIVE BISPHENOL ANALOGUES



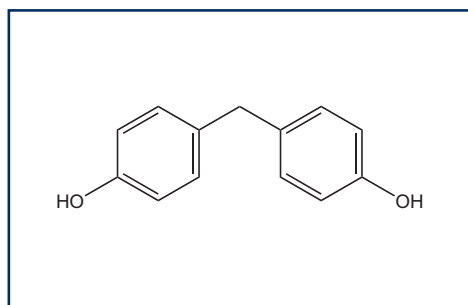
**BPAF**



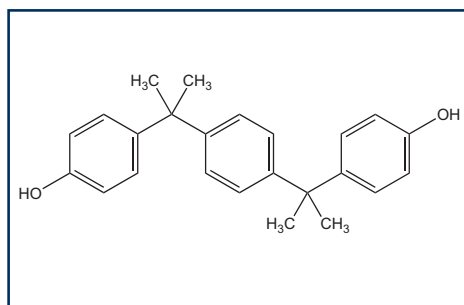
**BPAP**



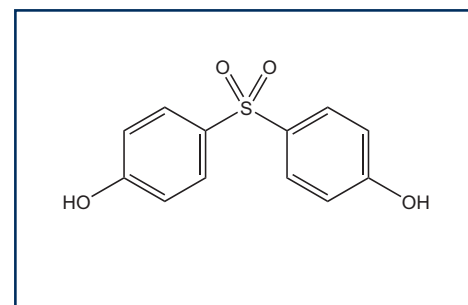
**BPB**



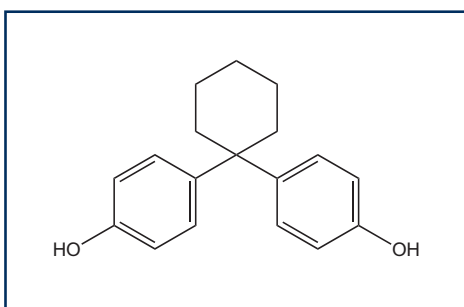
**BPF**



**BPP**



**BPS**



**BPZ**

