

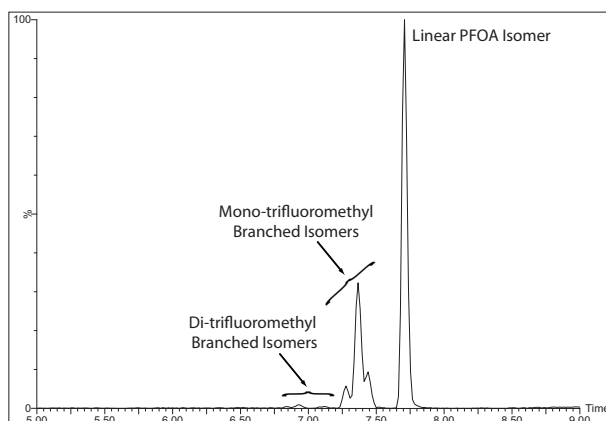


July 26, 2023

NEW PRODUCTS**PFAS Mixtures of Linear and Branched Isomers**

As the concern surrounding perfluoroalkyl and polyfluoroalkyl substances (PFAS) continues to increase due to the recognized impact of these compounds on environmental and human health, the need for ongoing analysis to ensure public safety is paramount. To support this analytical initiative, the chemists at **Wellington** have prepared quantitative isomeric mixtures of both PFOA (**br-PFOA**) and PFNA (**br-PFNA**) to allow commercial laboratories to comply with the requirements of U.S. EPA Methods 1633, 533, and 537.1. All isomeric mixtures listed below contain the linear isomer as well as mono-trifluoromethyl and di-trifluoromethyl branched isomers in ratios that match technical materials as closely as possible, but with an overall chemical purity of greater than 98%.

	Catalogue Number	Product (methanol)	Qty	Conc
NEW	br-PFOA	Perfluorooctanoic acid isomeric mixture	1.2 mL	50.0 µg/mL
NEW	br-PFNA	Perfluorononanoic acid isomeric mixture	1.2 mL	50.0 µg/mL
	br-PFHxSK	Potassium perfluorohexanesulfonate isomeric mixture	1.2 mL	50.0 µg/mL
	br-PFOSK	Potassium perfluorooctanesulfonate isomeric mixture	1.2 mL	50.0 µg/mL
	br-FOSA	Perfluorooctanesulfonamide isomeric mixture (in isopropanol)	1.2 mL	50.0 µg/mL
	br-NMeFOSA	N-Methylperfluorooctanesulfonamide isomeric mixture	1.2 mL	50.0 µg/mL
	br-NEtFOSA	N-Ethylperfluorooctanesulfonamide isomeric mixture	1.2 mL	50.0 µg/mL
	br-NMeFOSE	2-(N-Methylperfluorooctanesulfonamido)ethanol isomeric mixture	1.2 mL	50.0 µg/mL
	br-NEtFOSE	2-(N-Ethylperfluorooctanesulfonamido)ethanol isomeric mixture	1.2 mL	50.0 µg/mL
	br-NMeFOSAA	N-Methylperfluorooctanesulfonamidoacetic acid isomeric mixture	1.2 mL	50.0 µg/mL
	br-NEtFOSAA	N-Ethylperfluorooctanesulfonamidoacetic acid isomeric mixture	1.2 mL	50.0 µg/mL



Please contact your local distributor or info@well-labs.com for pricing and delivery.

Visit our website (www.well-labs.com) for a complete listing of our new products.

Quality
ISO 9001